



Wide Row Spacing in Pine Plantations

- The next four slides taken in a 9-year-old loblolly pine plantation planted at a density of 605 trees per acre demonstrate the spatial arrangement of progressively wider rows.
- Note:
 - Similar diameter, and crown lengths of trees.
 - Increased canopy gap with the wider rows.

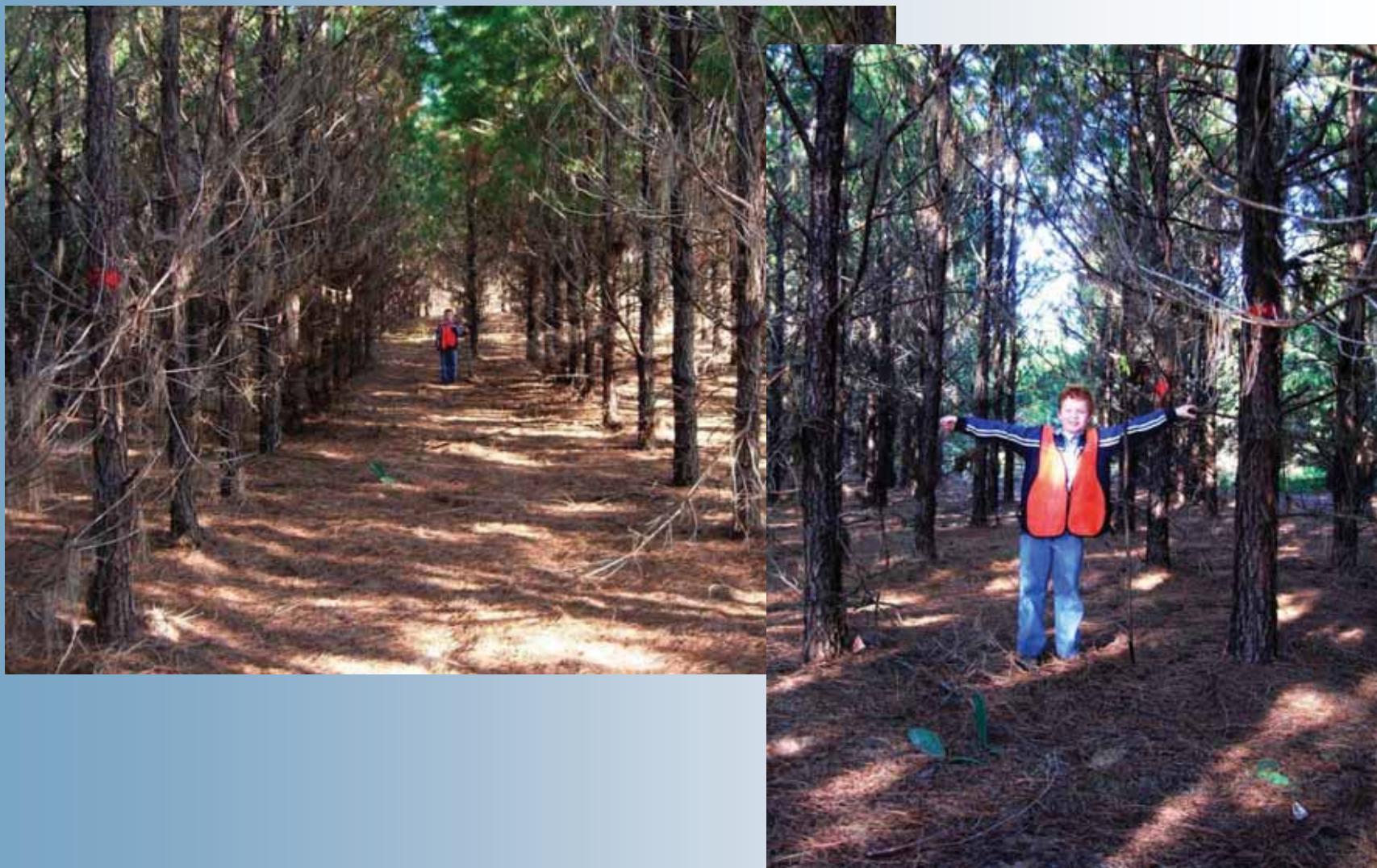


9x8-ft planting spacing





12x6-ft planting spacing



November 19, 2008

©2008 John Britt & Associates, LLC



18x4-ft planting spacing



24x3-ft planting spacing

