

# Mapping/ NOAA Aerial Imagery for Day to Day and Emergencies

31<sup>st</sup> Annual Meeting

Alabama Forest Owner's Association, Inc

Mark F Beeler, R.F.  
University Forester  
Land Management and Real Estate Services  
University of Alabama

## *2011 Preliminary Annual Statistics*

- NWS's preliminary estimate is that there have been 1,691 tornadoes in 2011.
- The previous yearly record number of tornadoes was set in 2004 with 1,817.
- The overall yearly average number of tornadoes for the past decade is 1,274.
- The preliminary estimated number of tornado fatalities for 2011 is 550.
- 2011 is ranked as the 4th deadliest tornado year in U.S. history.

## April 2011

-April 2011 is ranked as the most active tornado month on record with 758. There were an estimated 364 fatalities.

-The previous record for April tornadoes was set in April 1974 with 267 tornadoes.

-The average number of tornadoes for the month of April during the past decade is 161.

-The previous record number of tornadoes during *any month* was 542 tornadoes set in May 2004.

-NWS records indicate 321 people were killed during the April 25-28 tornado outbreak.

-NWS records indicate 360 people were killed by tornadoes during the entire month of April 2011.

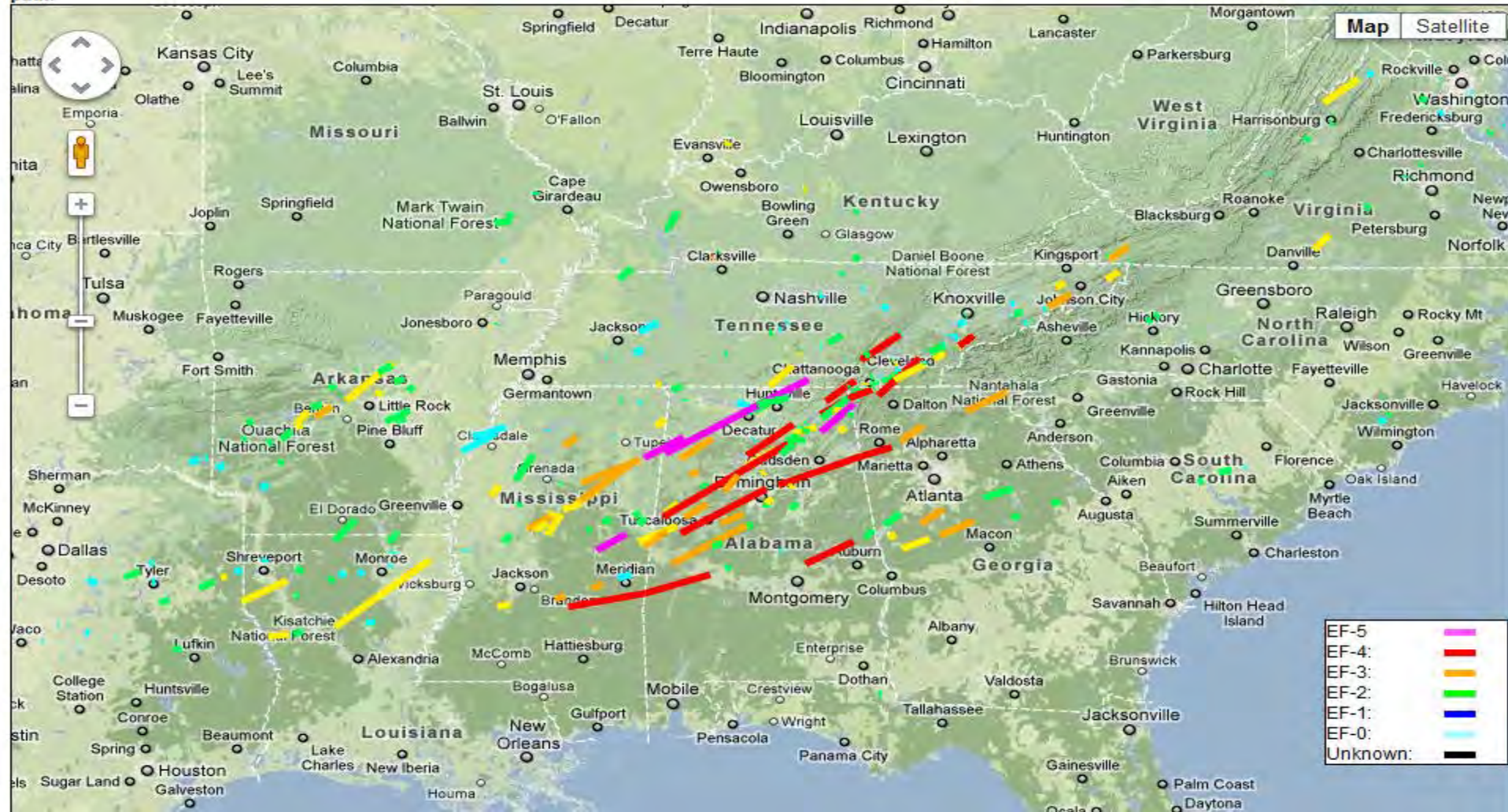


## Tornado Tracks: April 24th through the 29th, 2011

Download the tornado track KML here: [KML](#) (Updated: April 12, 2012 1205 UTC)

Download Local Storm Reports (24th-29th): [Shapefile](#) | [KML](#)

This map is meant to show the general path of the tornadoes based on a few points. If you zoom down to the neighborhood level, the tracks will likely not match the exact path.





Weather.gov Forecast

City, ST [» GO](#)[» Active Weather Alerts](#)[» NOAA Organizations](#)[» Working With NOAA](#)[» Media & Constituents](#)[» NOAA In Your State](#)[» Emergency Information for NOAA Employees](#)**Related Links**[» NOAA's Office of Marine and Aviation Operations](#)**Media Contact**[» John Ewald](#)  
240-429-6127[Tweet](#) 62[Like](#) 297**Share**

- [Email](#)
- [Print](#)
- [Facebook](#)
- [Google](#)
- [StumbleUpon](#)
- [Digg](#)
- [More Destinations](#)

## NOAA releases aerial imagery of Tuscaloosa, Ala. tornado damage

April 30, 2011

NOAA's [National Geodetic Survey](#) dispatched the [NOAA King Air 350CER](#) aircraft, equipped with specialized remote sensing equipment, on a mission to collect aerial photography at 5,000 feet from Tuscaloosa to Birmingham, Ala.

These "before and after" shots (pdf to right), taken yesterday afternoon, show damage caused by last week's tornado near 15th Street and McFarland Boulevard in Tuscaloosa.

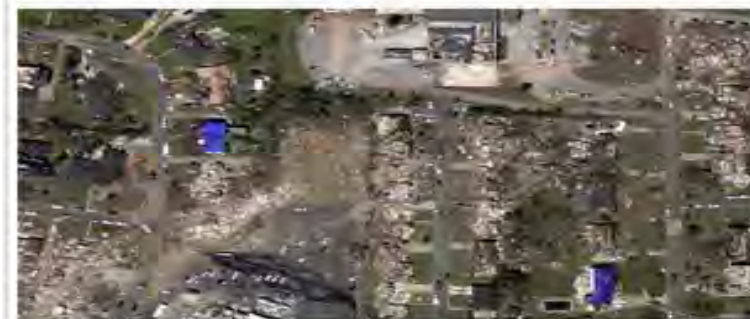
Photos will be used to assist federal and local officials in response and recovery efforts.

**UPDATE:** All images from NOAA flights are being posted on this public [website](#).

Hi-Res images available [online](#).

For more information, contact: John Ewald, [john.ewald@noaa.gov](mailto:john.ewald@noaa.gov), 240-429-6127.

NOAA's mission is to understand and predict changes in the Earth's environment, from the depths of the ocean to the surface of the sun, and to conserve and manage our coastal and marine resources. Visit us on [Facebook](#).



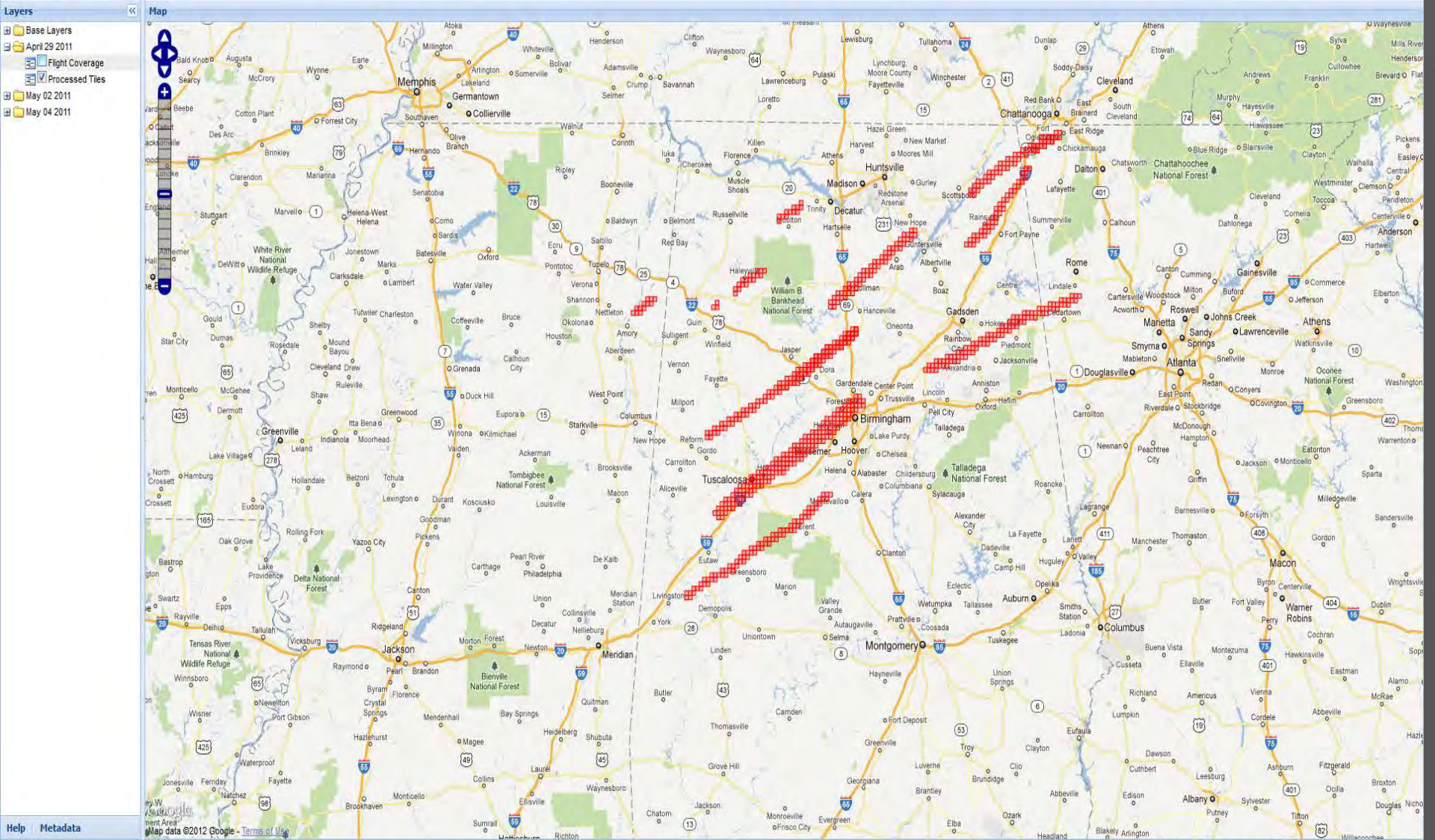
Before and after imagery depicting tornado damage in the vicinity of the intersection of 15th St. E. and McFarland Blvd. E. in southeast Tuscaloosa, AL. The before imagery is courtesy of Google, the after imagery was acquired from an altitude of 5,000 feet above ground level by the NOAA King Air April 29, 2011.

Hi-Res images available [online](#).

[Download PDF here.](#) (Credit: Google - before photo; NOAA - after photo)

# April 2011 Tornado Response Imagery Viewer

National Geodetic Survey

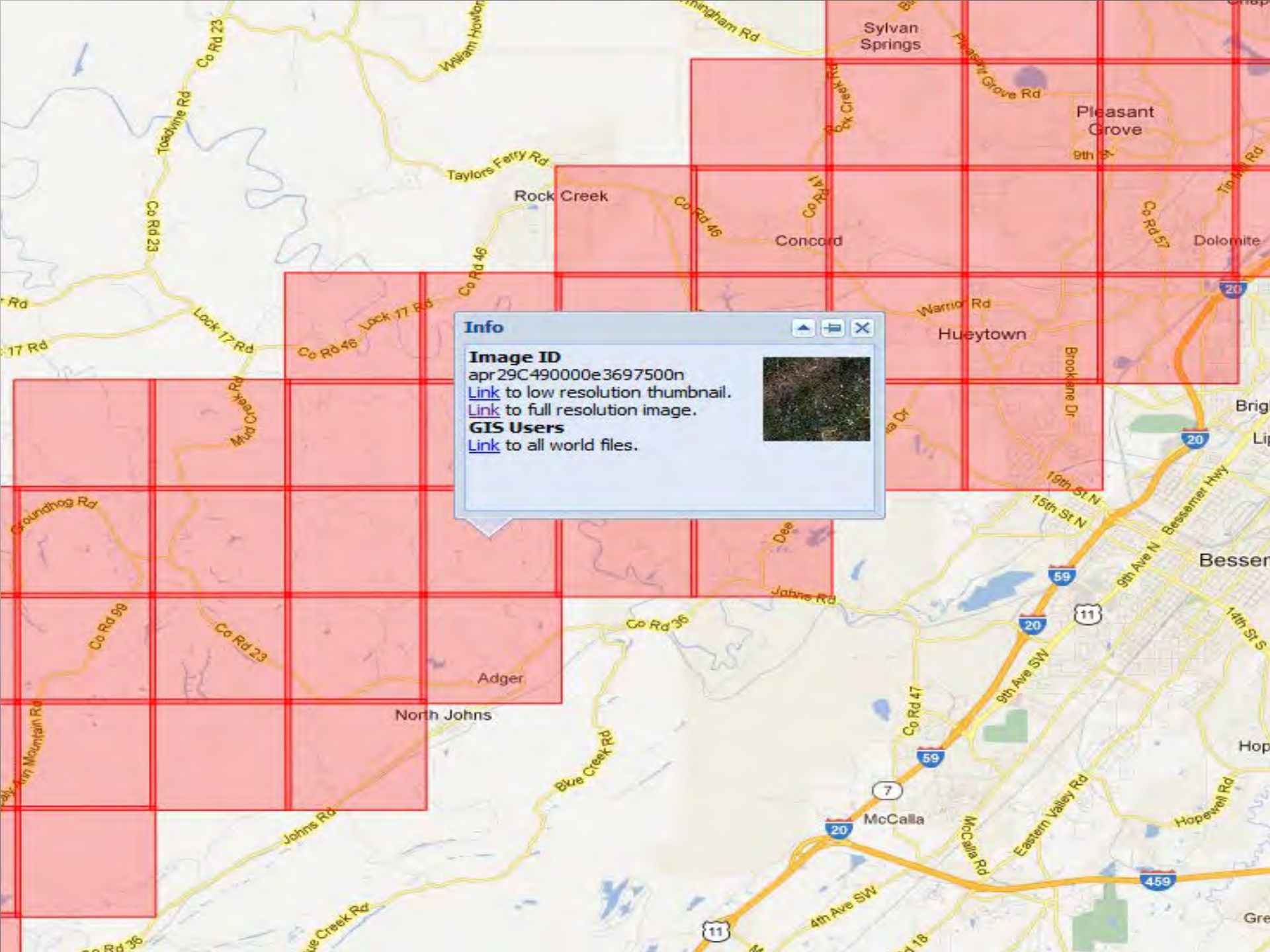


**Layers**

- Base Layers
- April 29 2011
  - Flight Coverage
  - Processed Tiles
- May 02 2011
- May 04 2011

Map

Help Metadata




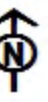
**Info**

**Image ID**  
apr29C490000e3697500n

[Link](#) to low resolution thumbnail.  
[Link](#) to full resolution image.

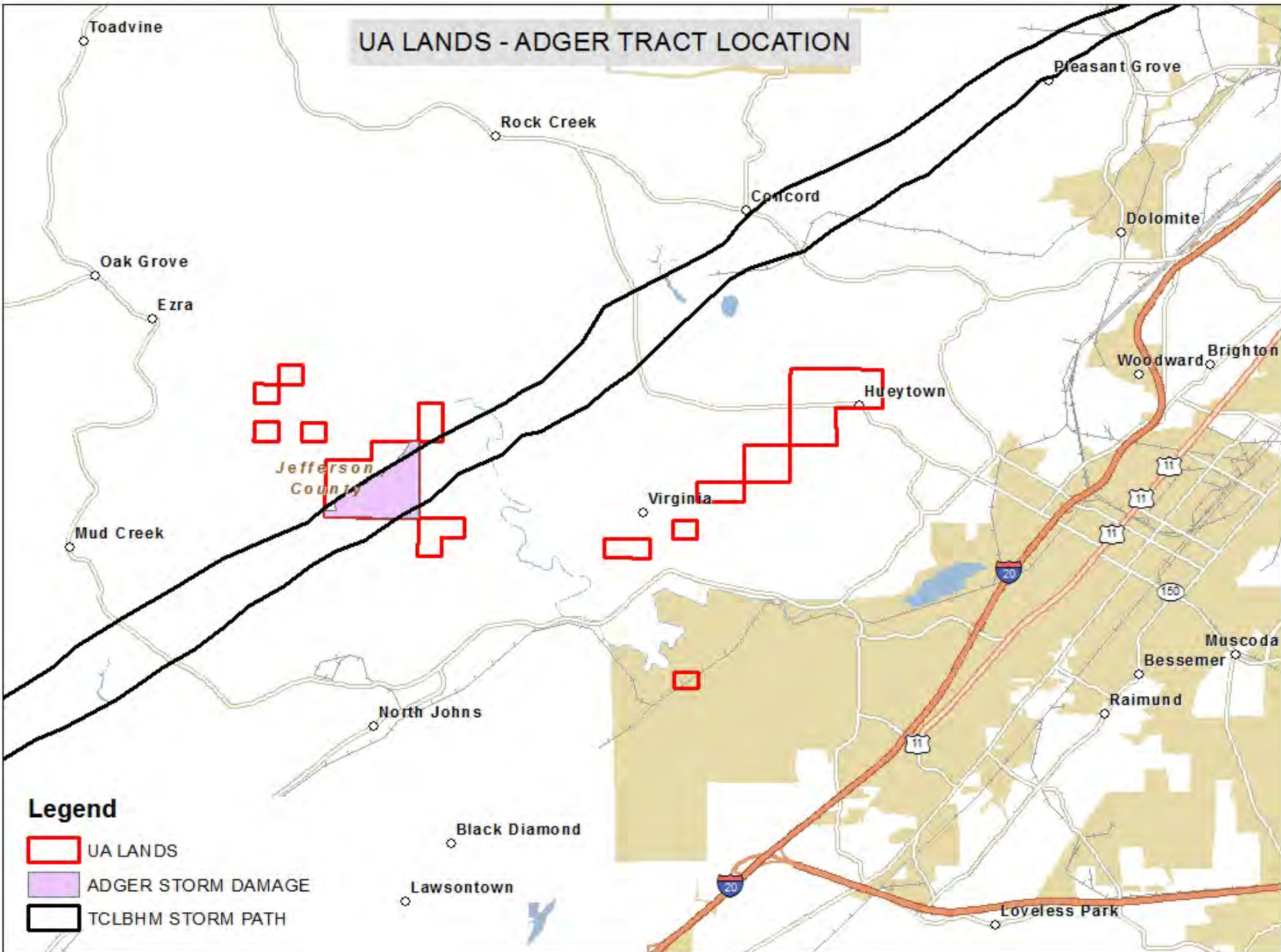
**GIS Users**  
[Link](#) to all world files.







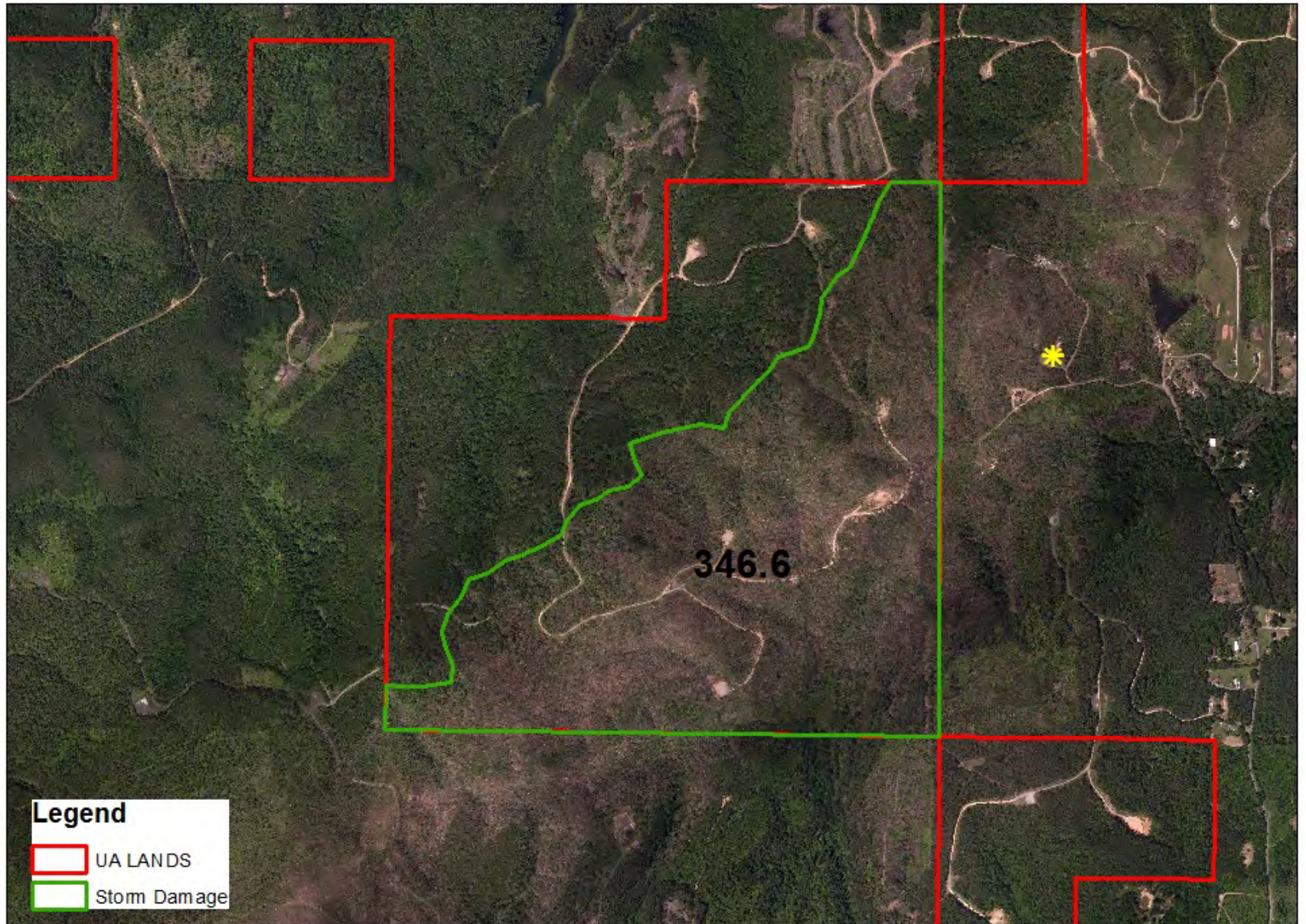
# UA LANDS - ADGER TRACT LOCATION



## Legend

- UA LANDS
- ADGER STORM DAMAGE
- TCLBHM STORM PATH

Adger Tornado area  
Jefferson County, AL





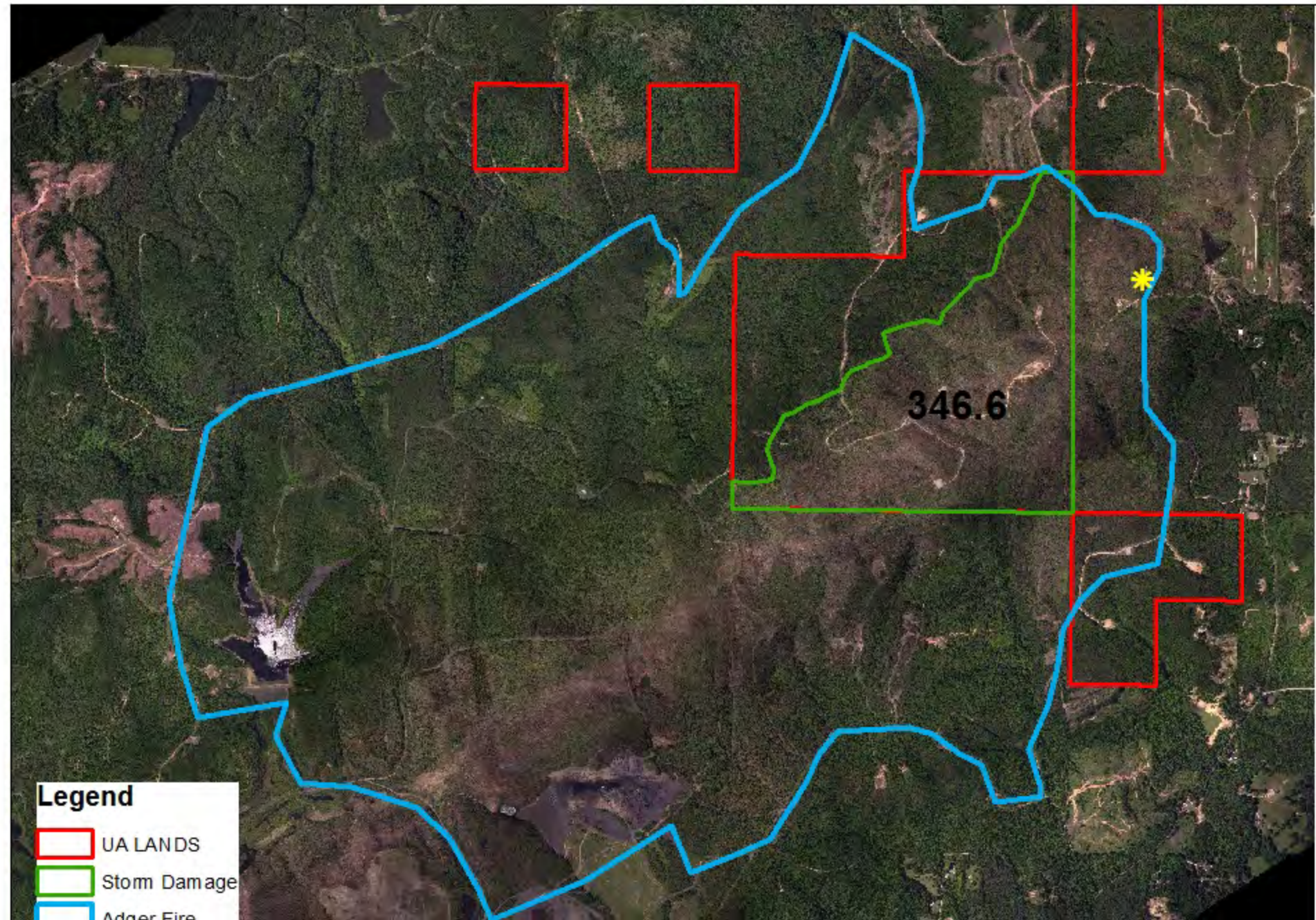








# Jefferson County, AL



## Legend

-  UA LANDS
-  Storm Damage
-  Adger Fire















# Emergency Response Imagery

National Geodetic Survey

[NGS Home](#)

[About NGS](#)

[Data & Imagery](#)

[Tools](#)

[Surveys](#)

[Science & Education](#)

[Search](#)



The imagery posted on this site was acquired by the **NOAA Remote Sensing Division** to support NOAA national security and emergency response requirements. In addition, it will be used for ongoing research efforts for testing and developing standards for airborne digital imagery.

## Emergency Response Imagery:

Hurricane Irene (2011): [Web Map Interface](#) [HTML Interface](#)

Joplin, MO Tornado (2011)

Tuscaloosa, AL Tornado (2011)

North Dakota Flooding (2011)

Hurricane Earl (2010): [Web Map Interface](#) [HTML Interface](#)

Nor'Easter Nov09 (2009)

Hurricane Ike (2008)

Hurricane Gustav (2008)

Hurricane Humberto (2007)

Tropical Storm Ernesto (2006)

Hurricane Wilma (2005)

Hurricane Rita (2005)

Hurricane Ophelia (2005)

Hurricane Katrina (2005)

Hurricane Dennis (2005)

Hurricane Ivan (2004)

Hurricane Jeanne (2004)

Hurricane Isabel (2003)

## Navigation

[National Geodetic Survey](#)

## Contact Us

[Content and Technical Issues](#)

[Comments and Policy Issues](#)

Website Owner: National Geodetic Survey / Last modified by NGS Webmaster Aug 29 2011



## Center will make UA 'nerve center' for water research

The National Oceanic and Atmospheric Administration broke ground on Tuesday on a National Water Center.

The facility will be built on the Tuscaloosa campus of The University of Alabama.

Officials say the center will improve the forecasting and reporting of water crises which will better policy and safety.