



Eufaula National Wildlife Refuge

part of the...

US Department of the Interior
US Fish and Wildlife Service
National Wildlife Refuge System



What is the National Wildlife Refuge System?

Our Mission:

The mission of the National Wildlife Refuge System is to administer a national network of lands and waters for the conservation, management and where appropriate, restoration of the fish, wildlife and plant resources and their habitats within the United States for the benefit of present and future generations of Americans.

National Wildlife Refuge System

A photograph of a sunset over a body of water. The sky is filled with soft, colorful clouds in shades of orange, pink, and purple. The sun is low on the horizon, creating a bright glow. In the foreground, the dark silhouettes of trees and branches are reflected in the calm water. The overall mood is serene and natural.

- In 1903, President Theodore Roosevelt created the first national wildlife refuge on a small island in Florida, known today as Pelican Island NWR.

- The National Wildlife Refuge System was established out of necessity due to the over harvest of migratory birds for the fashion industry and trade market causing great declines in wildlife populations.



National Wildlife Refuge System



- The National Wildlife Refuge System now encompasses more than 553 wildlife refuges and over 150 million acres.

National Wildlife Refuge System

- **Hosts 41 million visitors each year**
- **Has a \$500 budget**
- **Employs 5000**



The background of the slide is a photograph of a sunset or sunrise over a body of water. The sky is filled with soft, colorful clouds in shades of orange, pink, and purple. The sun is low on the horizon, creating a bright glow. In the foreground, there are dark, silhouetted trees and branches, some of which are reflected in the water. The overall mood is serene and natural.

National Wildlife Refuge Improvement Act 1997

- **Required management as a system**
- **Affirmed wildlife management as first priority**
- **Identified six priority public uses**
- **Defined “Appropriate” and “Compatible”**
- **Required each refuge to develop a Comprehensive Conservation Plan**



Eufaula National Wildlife Refuge

- **Established in 1964 due to strong community support.**



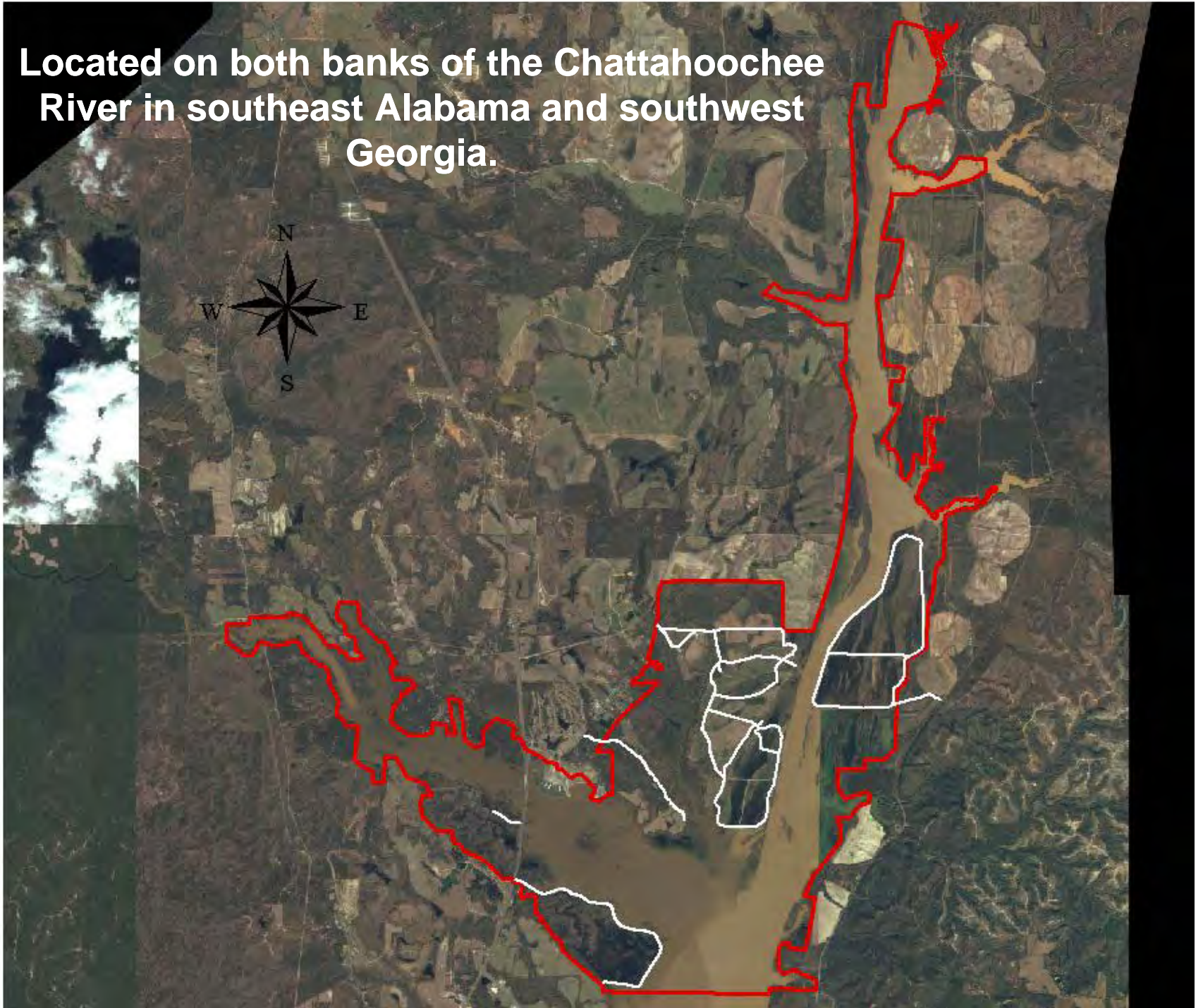
Eufaula National Wildlife Refuge



- Comprised of 11,184 acres containing a variety of upland and wetland habitats
- Approximately 4,000 acres are open water areas of the 45,000-acre Walter F. George Lake (Lake Eufaula)

Eufaula NWR Boundary

Located on both banks of the Chattahoochee River in southeast Alabama and southwest Georgia.



What We Do?

- Provide habitat for migratory birds, especially waterfowl, and many other species.
- Provide opportunities for wildlife-oriented recreation and education.

When Should You Visit?

The refuge provides many wildlife activities and is open throughout the year during daylight hours.





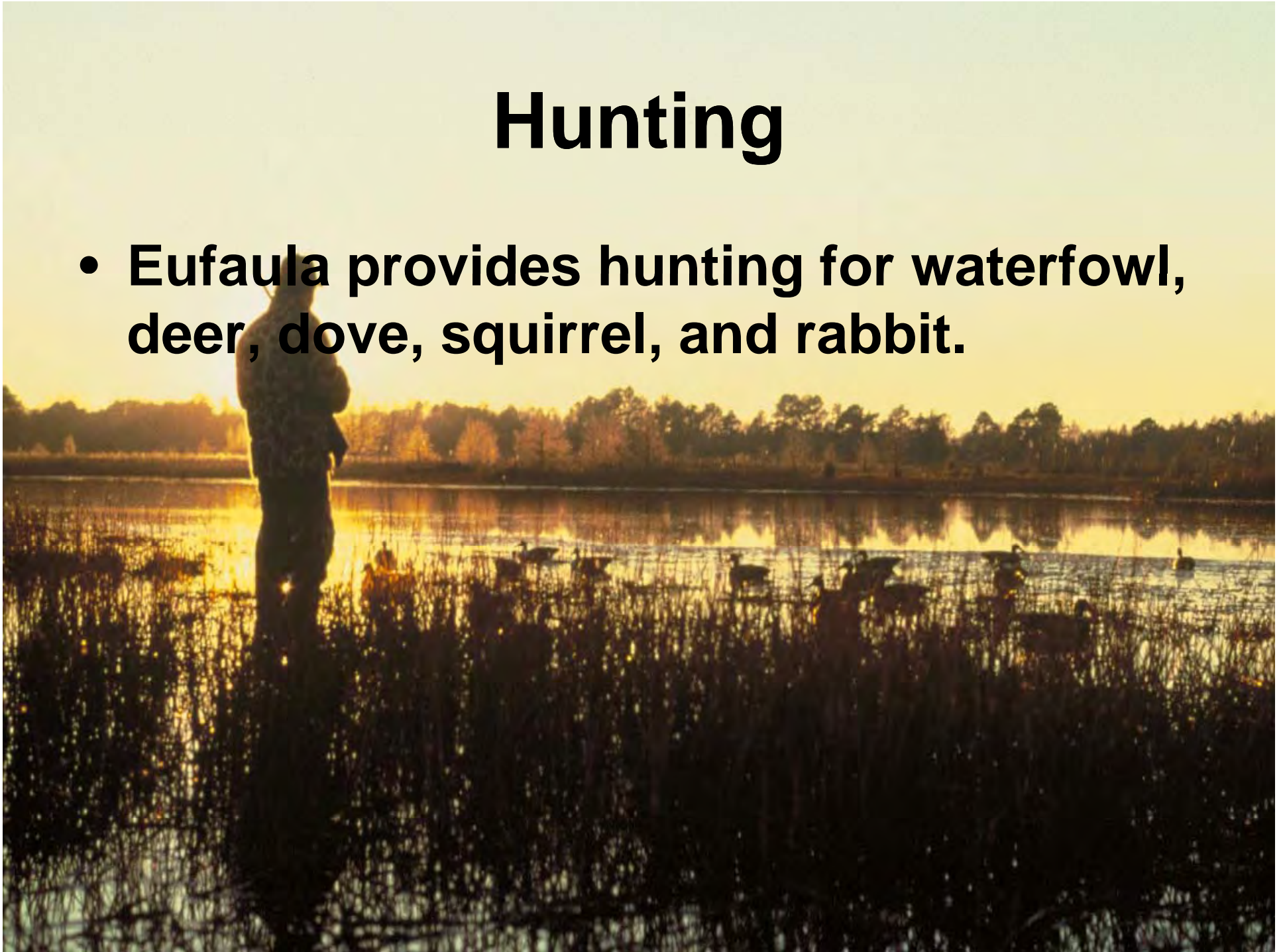
What can you do at Eufaula NWR?

The “Big 6”

- **Hunting**
- **Fishing**
- **Wildlife Photography**
- **Wildlife Observation**
- **Natural Resources Interpretation**
- **Environmental Education**

Hunting

- **Eufaula provides hunting for waterfowl, deer, dove, squirrel, and rabbit.**



Fishing

- **Fishing is allowed year-round.**



Photography

A photograph of a man in profile, wearing glasses and a patterned shirt, standing on a sandy beach. He is holding a camera with a large lens mounted on a tripod. The background features a calm body of water reflecting the golden light of a sunset. The sky is filled with scattered clouds, some of which are illuminated from below by the setting sun, creating a dramatic and colorful scene. The overall mood is serene and focused on nature photography.

- **Eufaula provides many opportunities to capture some of nature's beautiful sceneries.**

Wildlife Observation

A photograph of a person in a dark winter jacket and hood, standing on a wooden observation platform covered in snow. The person is holding binoculars up to their eyes, looking out over a snowy landscape. The platform has a wooden railing also covered in snow. In the background, there are large windows or openings in the structure, showing a view of a snowy field and trees under a bright sky. Another person wearing a blue hat is partially visible in the background, also looking out. The overall scene is a winter wildlife observation site.

- A seven-mile auto tour route, two observation platforms, a half mile walking trail and other areas of interest are available daily during daylight hours.

Wildlife Drive

The wildlife drive has a route that traverses all roads in the Upland and Houston Units in the summer. The drive is reduced in portions of the Units to provide sanctuary for wintering waterfowl November 15-February 28.

Wing Spread Wildlife Drive



Environmental Education and Interpretation

- Environmental Education is a primary goal of Eufaula NWR.
- Groups are welcome.
- On-site and off-site programs can be arranged.



Current Staff

- Refuge Manager
- Asst. Refuge Manager
- Biologist
- Office Assistant
- Education Specialist*
- Eng. Equip. Operator
- Maintenance Worker

Six permanent, one term*

Current Management Programs

- Longleaf Pine Restoration
- Waterfowl Management
- Wildlife Farming Program
- Moist Soil Management
- Fire Management



Longleaf Pine Restoration

Southern US

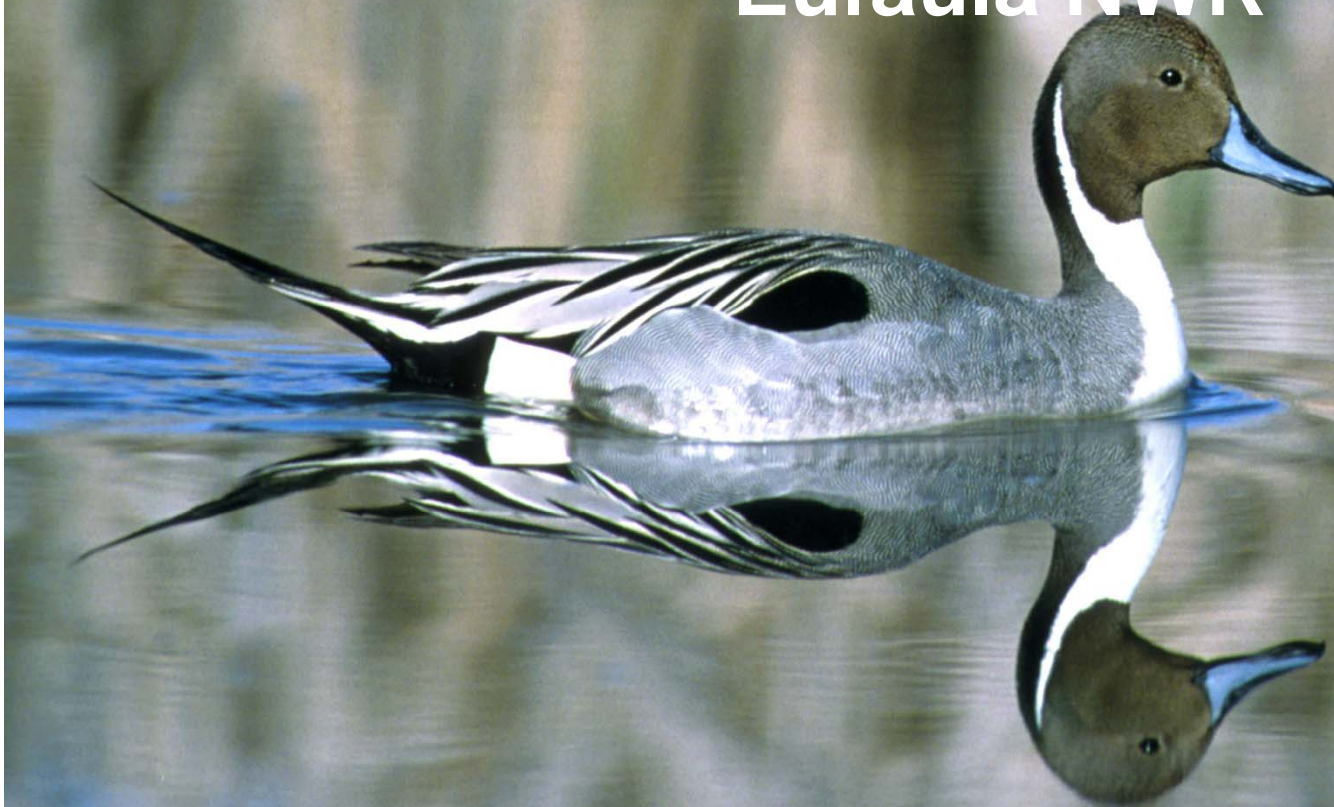
- Once covered 90 million acres
- Today only 3 million acres remain

ENWR

- 894 acres restored to longleaf pine
- 436 seedlings per acre

Waterfowl Management

One of the Establishing Purposes of
Eufaula NWR



Water Management

*****Good water control is the key to waterfowl and waterbird habitat management*****

Refuge operates eight pumping stations that pump water in and out of our impoundments and manipulates dozens of water control structures





Pump Station

Wood Duck Boxes

A photograph of a grassy field with several wooden duck boxes on posts in the background. The boxes are rectangular and mounted on dark posts. The field is filled with tall, green grass. In the background, there is a dense line of trees with green foliage. The sky is visible at the top, showing some light clouds.

104 managed boxes now with over 80% use
240 wood ducks banded in 2010

Wildlife Farming Program

A green tractor with a yellow tank is parked in a field. Several white birds are flying and on the ground in the foreground. The background is a dense line of trees.

Approx. 175 acres farmed

- corn
- sunflowers
- milo
- millet

Moist Soil Management



Refuge Impoundments are managed for natural vegetation for waterfowl

NOV 16 2000


Invasive Species (Upland)

- Tree-of-heaven
- Mimosa
- Showy rattle-box
- Wild carrot
- Hairy cluster-vine
- Shrub bush-clover
- Chinese bush-clover
- Japanese and Chinese privet
- Italian ryegrass
- Japanese honeysuckle
- Japanese climbing fern
- Osage orange
- Chinaberry
- Nepal grass
- Narcissus
- Bahia grass
- Bases grass
- Beefsteak plant
- White poplar
- Kudzu
- Wild radish
- Chinese tallow
- Rattle-box
- Brazilian vervain
- Stiff vervain
- Chinese wisteria

Invasive Species (Aquatic)



- Alligatorweed
- Water Hyacinth
- Water Primrose
- Parrot Feather
- American Lotus
- Cattails
- Maidencane
- Water Smartweed
- Sesbania (3 spp.)
- Black Willows
- Cocklebur
- Giant Cutgrass
- Giant Salvinia
- Egeria

A photograph of a forest fire. In the foreground, a large, dark tree trunk stands prominently. A small white tag is attached to the trunk. The ground is covered in low-lying vegetation, and a fire is burning along the base of the tree and in the background. The fire is bright orange and yellow, with some smoke rising. The background shows a dense forest of tall, thin trees, some of which are bare. The overall scene is a controlled fire in a forest setting.

Fire Management

Prescribed fire is one our best
management tools

A photograph of a forest fire. In the foreground, a large, dark tree trunk stands vertically. The background is filled with intense orange and yellow flames, with some smoke visible. The sky is a pale, hazy blue. The overall scene is dramatic and captures the intensity of the fire.

Fire Management

- Refuge burned @ 200 acres in March 2011
- Plan to burn 300-500 acres per year

DU and COE Partnerships

EUFAULA NATIONAL WILDLIFE REFUGE M.A.R.S.H. PROJECT

**THIS WETLAND PROJECT IS A
COOPERATIVE EFFORT BETWEEN**



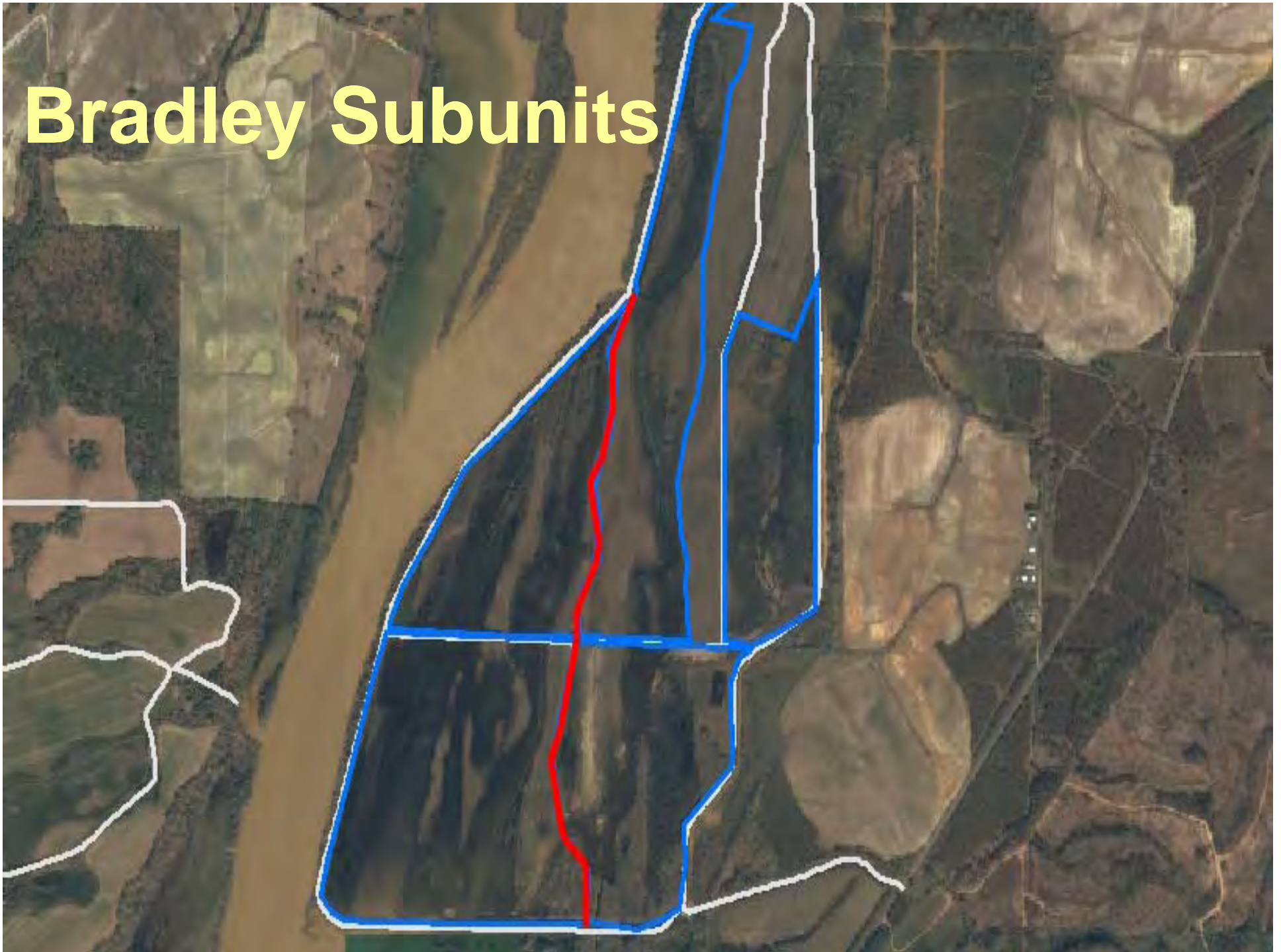
**US Army Corps
of Engineers**

**DUCKS UNLIMITED
U. S. FISH & WILDLIFE
U. S. ARMY CORP OF ENGINEERS**

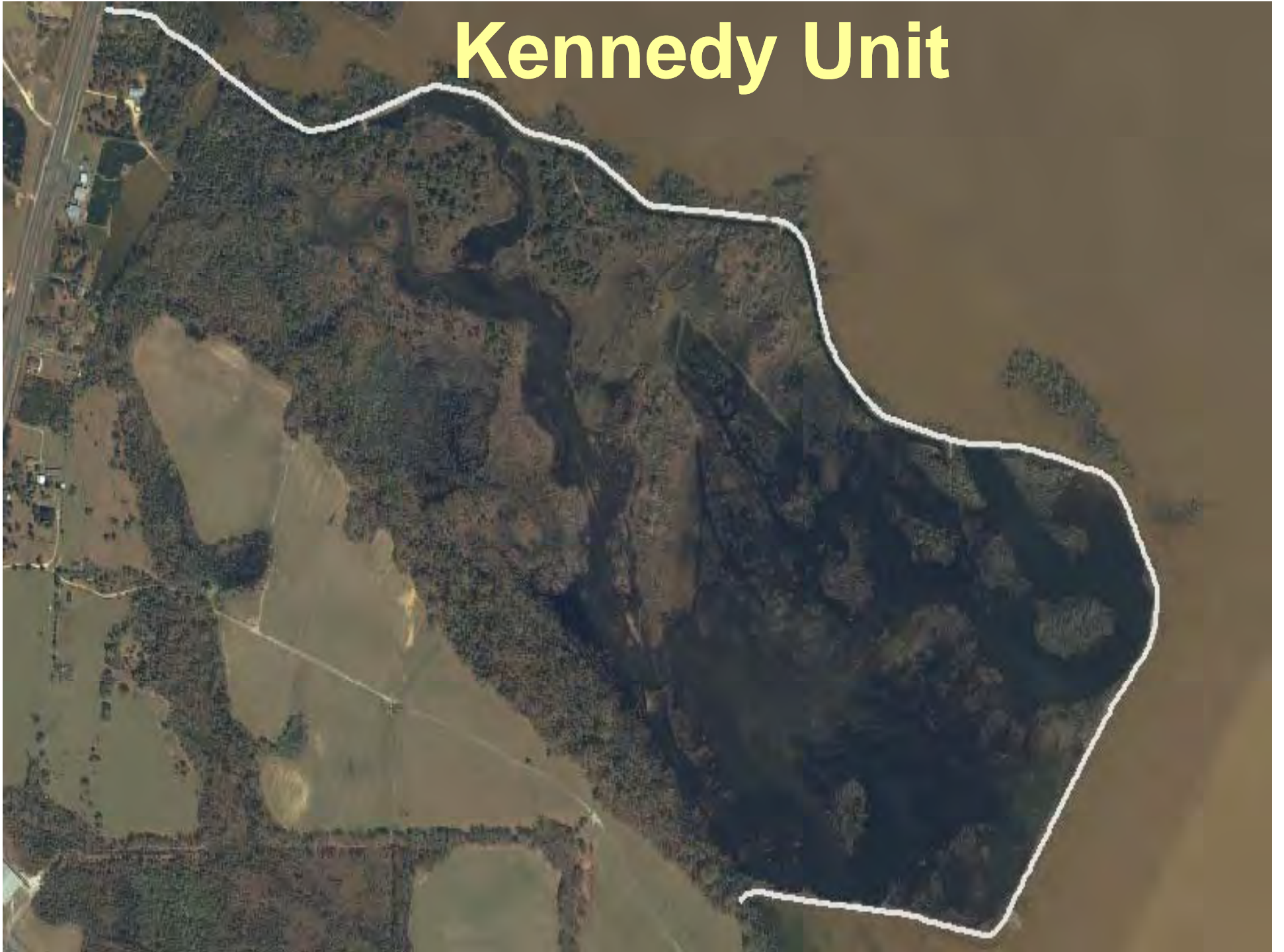
Bradley Unit



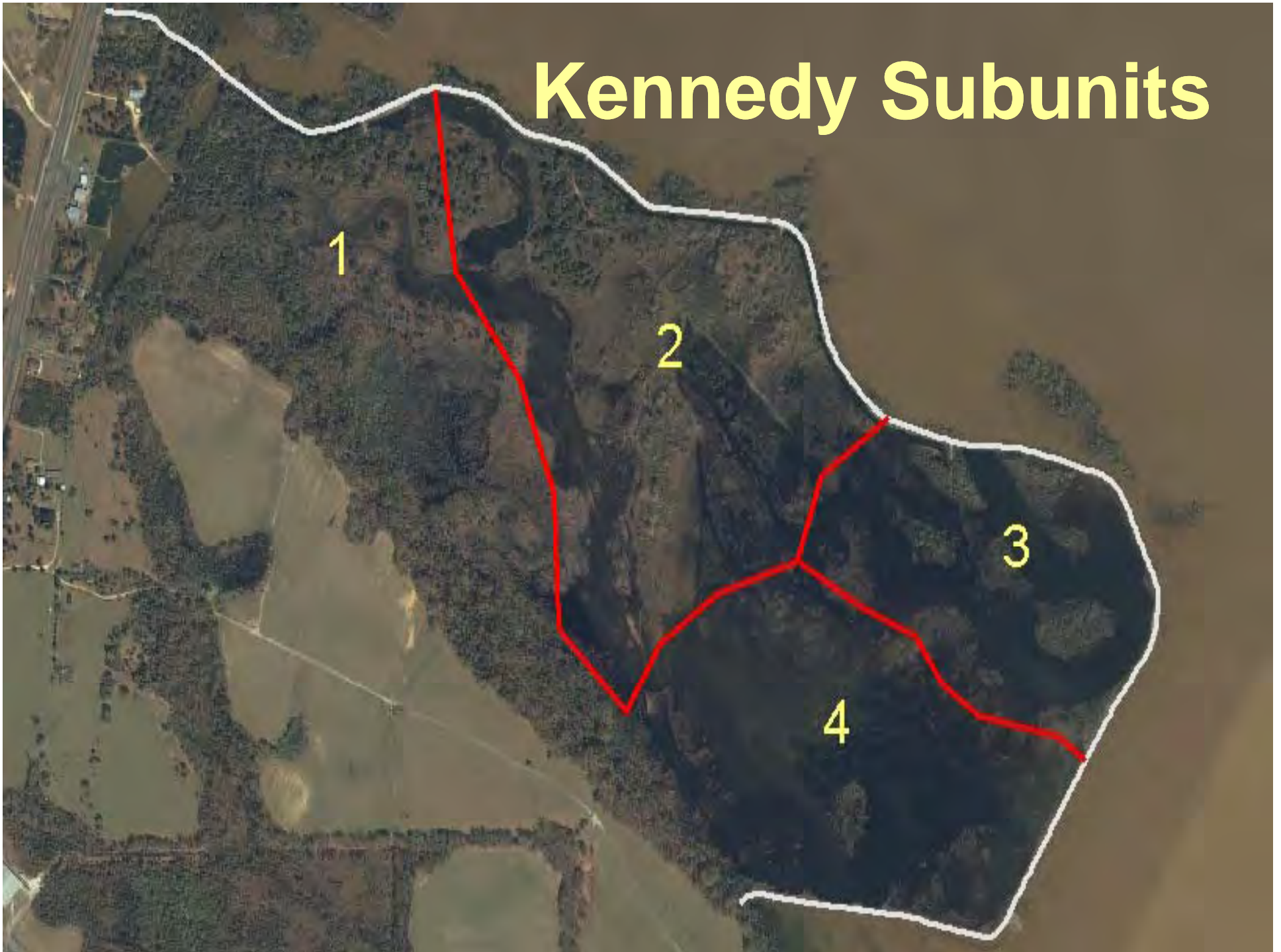
Bradley Subunits



Kennedy Unit



Kennedy Subunits



Where do we go now?

- **New Projects**
- **Funding and Personnel**
- **Partnerships and Volunteers**
- **Step-down Management Plans**
- **Monitoring and Adaptive Management**
- **Climate change**

